

TYPE DESIGNATION REGISTRATION FORM

TR TUBE

Manufacturer: Bomac Laboratories, Inc.  
Beverly, Massachusetts

Mfr's. Type No. - BL-11

Tentative JETEC Type No. 6282

The 6282/BL-11 is a broad band TR tube designed to effectively decouple the receiver from a common transmitting and receiving antenna during a period of transmission. It is an integral cavity type with fixed tuned gaps. Its operational band is from 23,350 to 24,950 megacycles per second.

ELECTRICAL DATA - GENERAL

Operational Band - VSWR 1.9 max.	23.35 to 24.95 KMc.
"    "    - VSWR 1.4 max.	23.50 to 24.75 KMc.
"    "    - VSWR 1.2 max.	23.70 to 24.30 KMc.
Ignitor Starting Voltage (ignitor negative)	750 Vdc. max.
Ignitor Voltage Drop at $I_i = 100 \mu\text{Adc}$ .	325 to 475 Vdc.
Spike Leakage Energy	0.2 erg max.
$p_o = 30 \text{ kw}$ ; $p_{rr} = 1000 \text{ pps}$ ;	
$tp_1 = 0.5 \mu\text{s}$ ; $tp_2 = 0.25 \mu\text{s}$ ;	
$F = 24.00 \text{ KMc}$ ; $I_i = 100 \mu\text{Adc}$ .	
Flat Leakage Power	40 mw max.
Conditions - See Spike Leakage Energy	
Insertion Loss at 24.00 KMc and $I_i = 100 \mu\text{Adc}$	0.8 db max.
Recovery Time at 30 kw peak - 3 db down	4.0 $\mu\text{s}$ max.

MECHANICAL DATA - GENERAL

Mounting Position	Any
Number of Ignitors	One
Ambient Temperature Range (non-operating)	-55°C to $\neq$ 100°C
Net Weight, approximately	2 ounces

TYPE DESIGNATION REGISTRATION - Page 2

TR TUBE - BL-11

MAXIMUM RATINGS

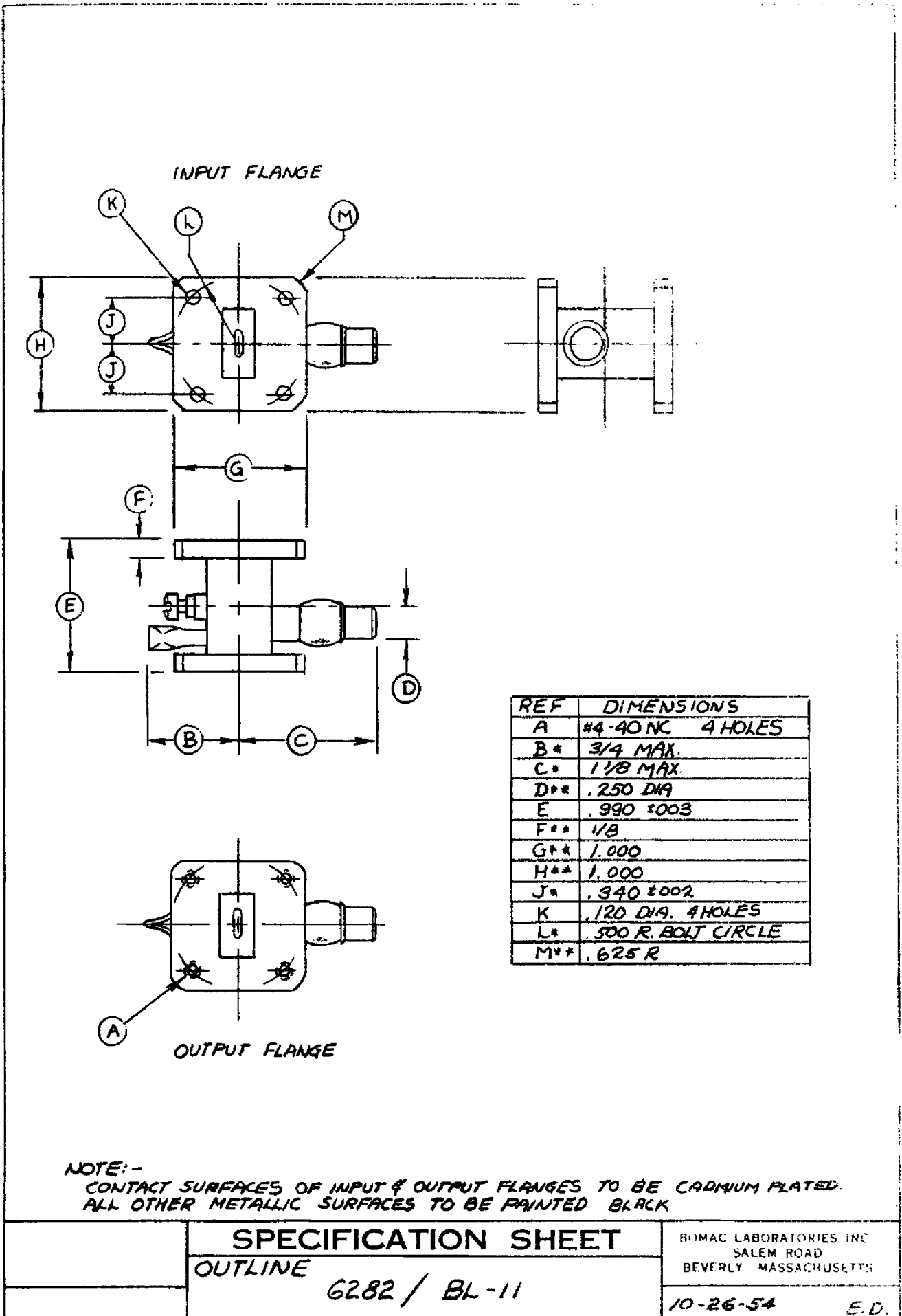
Transmitter Peak Power	35 kw.
Ignitor Current	200 $\mu$ Adc.

ELECTRICAL AND MECHANICAL DATA WITH LIMITS

Effective Short Plane (Measured from face of input flange)	Min.	Bogey	Max.
	0.0215	0.024	0.0265 In.

OUTLINE DRAWING

See attached drawing dated 10/26/54.



NOTE:-  
 CONTACT SURFACES OF INPUT & OUTPUT FLANGES TO BE CADMIUM PLATED.  
 ALL OTHER METALLIC SURFACES TO BE PAINTED BLACK

**SPECIFICATION SHEET**

OUTLINE

6282 / BL-11

RUMAC LABORATORIES INC  
 SALEM ROAD  
 BEVERLY MASSACHUSETTS

10-26-54

E.D.